

UNLOCK THE MYSTERIOUS KINGDOM BY LUXURY RIVER CRUISE

authentic asia burma

2015/2017

FREQUENT
FLYER 





Cruiseco Explorer takes you deeper into the mystery and the simplicity

If you are searching for an adventure that you'll remember forever, this is it. Imagine the delights that await you on a luxury river cruise through a once 'forbidden land'.

Cruiseco is a pioneer in Burmese river cruises and is now operating its own ship Cruiseco Explorer for a second year, which promises to take you into the absolute heart of an ancient and glorious history.

In a world of mass travel this is a refreshing opportunity to explore a country thoroughly, immersing yourself in its culture, spectacle and antiquity—all while in the ultimate elegance and comfort.

Our itineraries draw on years of experience and decades of local knowledge. Your days will be crammed with visiting breath-taking landscapes as English-speaking guides reveal countless historical treasures and introduce you to the friendliest local people.

On board you will enjoy the most sumptuous of surroundings as this waterborne palace glides along waterways previously denied to outsiders' eyes.

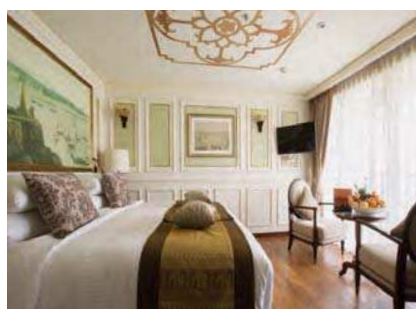
Your evenings will feature tantalising cuisine, enchanting local entertainment and service from our ever-attentive crew, before it's time to retreat to your sumptuous five-star haven.

Each day will also be a chance to make lasting friendships with other guests who share your hunger for a river cruise that is authentic and entirely unforgettable .

Cruiseco has set the benchmark again, you need only set the date.



From bow to stern Cruiseco Explorer...



surpasses the highest expectations

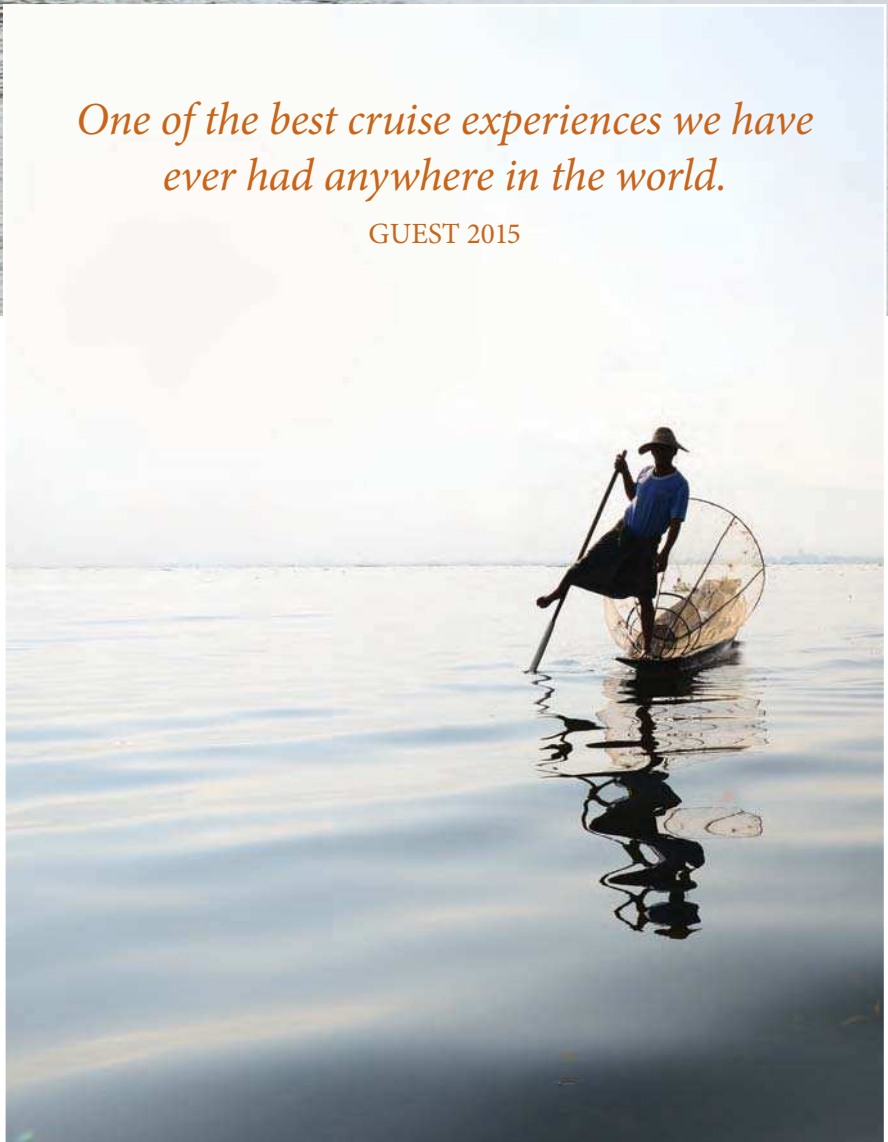


and offers the most magical of memories.



One of the best cruise experiences we have ever had anywhere in the world.

GUEST 2015



11 nights Mandalay to Yangon (downstream)	8
11 nights Yangon to Mandalay (upstream)	10
14 nights Inle Lake to Yangon (downstream)	12
17 nights Mandalay to Yangon (downstream)	16
Extensions Adding even more	20
FAQ and Booking Conditions	26



A land where bizarre is the norm...



spiritual values are preserved...



and the simplest life abounds.



Travelling in a small group lets you share the biggest experiences

Cruiseco is renowned for combining its luxury cruising expertise with local knowledge to create the most authentic itineraries and the most intimate explorations

The launch of the Cruiseco Explorer signals a transformation of river cruising in Burma. With a combination of luxury and service not seen before, its itineraries afford you the ideal balance of spell-binding sightseeing and rejuvenating relaxation.

The arrival of each morning delivers you yet another chance to connect with a land steeped in myths, rich in legends and laden in folklore. Fortunately, our hand-picked local guides will ensure you see the most magical and learn the most important of it all.

Burma is a kaleidoscope of influences and beliefs. Its centuries-old tea culture, faded colonial grandeur, and devout spiritual

observances combine in a tapestry of sights, sounds and tastes. Awe-inspiring monuments sit aside the most basic of living and new technologies force their presence on traditional cityscapes.

With so much to savour it's easy to see how, without expertly planned itineraries, you could be overwhelmed and under-served. Cruiseco ensures that what other operators may consider an 'extra' is included as standard and there's always time to take it in.

It is difficult to imagine a country with more contrasts but it won't be difficult for you to experience them all on this enthralling river cruise. Welcome aboard.



From the gloriously intricate...



and the wonderfully delicate...



to the most robust and rudimentary.

This trip gave us a better understanding of the people of Myanmar — especially in the villages, their happy smiling faces were an inspiration to us all.

GUEST 2015



Going ashore for so much more

Like you, your fellow travellers are eager to meet with local people and learn of lives foreign to their own.

Cruiseco's shore excursions are noted for their professionally trained, English-speaking guides. As 'insiders' they assure you of a more intimate, authentic experience.



Twentieth century technology...



and ancient majesty...



are backdrops to humble practicality.



Cruiseco Explorer has a fabulous, luxurious and practical design. Extremely comfortable with an excellent housekeeping team.

GUEST 2015

After the day's exploration even more discoveries await you on board

Luxurious appointments, mouth-watering cuisine, impeccable service... Cruiseco Explorer is a floating 5-star hotel and your ultimate waterbed.

Restricted to 56 guests, you are assured of the most cossetting privacy and the most accessible amenities. Choose either a state-room or a suite and prepare to be amazed at the quality and spaciousness of your sanctum.

All accommodations come with a french or exterior balcony and bathroom. And deluxe suites even feature a jacuzzi.

From its sundeck to the bar, dining room, spa, gym...Cruiseco

Explorer exudes a relaxed sophistication and 'private club' feel.

Of course your entertainment is not limited to the ship's facilities. Evenings on board will include skilful demonstrations by local performers, depicting this wondrous and enigmatic land.

And the hospitality is delivered by a team intent on exceeding your expectations; no wonder that this ship is lauded as the highest of high-end cruising.

Cruiseco Explorer is the epitome of luxury with the finest amenities, inviting public areas and relaxing sun beds on its observation deck.

Everything about Cruiseco Explorer says 'Welcome aboard', from the ever-attentive crew, the warm wood-tones, to the rich furnishings that abound throughout.

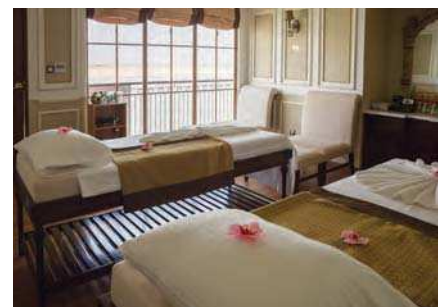
And after enjoying a rich array of epicurean delights, using the freshest of local produce, you can succumb to the skilled hands of the spa attendants.



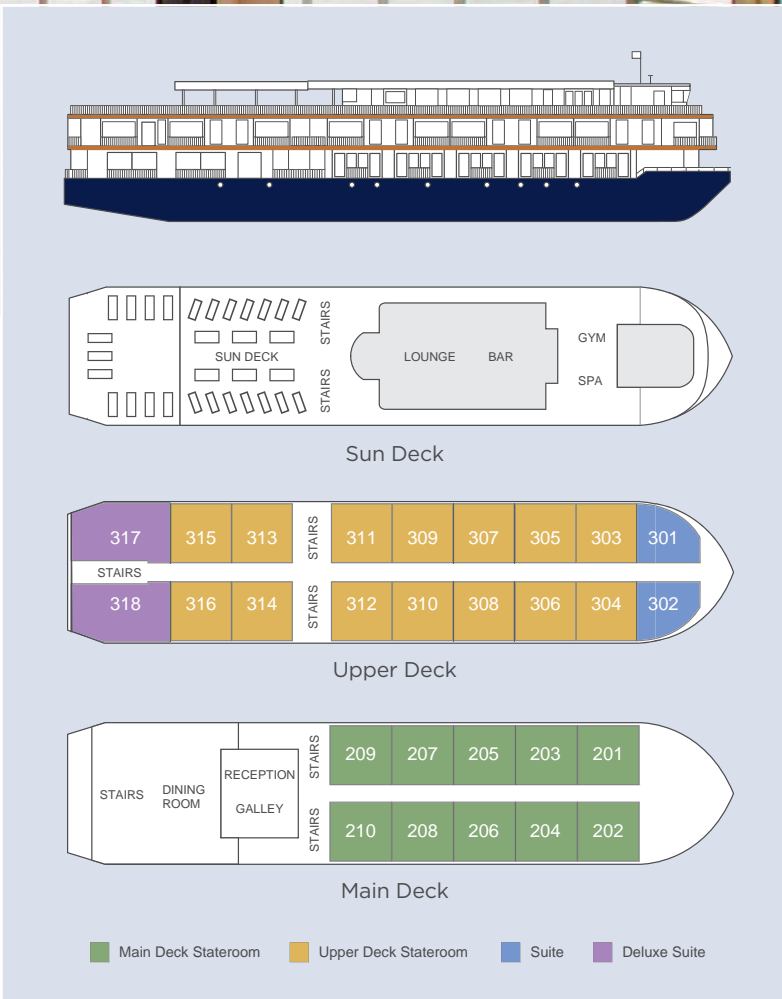
What better ending than a riverside nightcap...



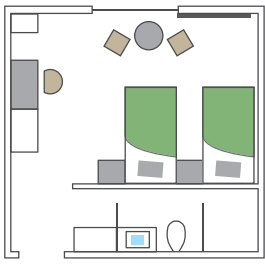
...or perhaps there's room for one more bite.



Being aboard means being pampered.

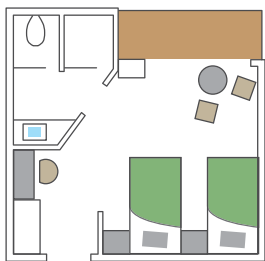


Relax in the sheer cosiness of your Main Deck Stateroom while enjoying the view from your own french balcony.



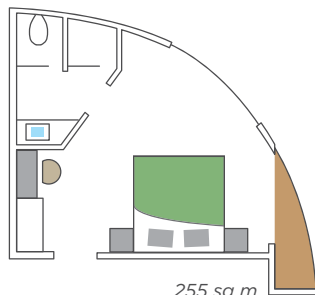
265 sq m

After marvelling at the internal features in your Upper Deck Stateroom, you will be captivated by the view from your floor to ceiling windows and exterior balcony.



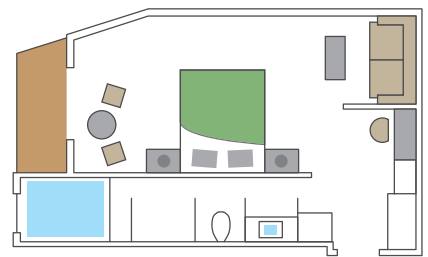
265 sq m

Choose a Suite and you'll be rewarded with even more luxurious space and the sweeping balcony views that being in such a prominent position offers.



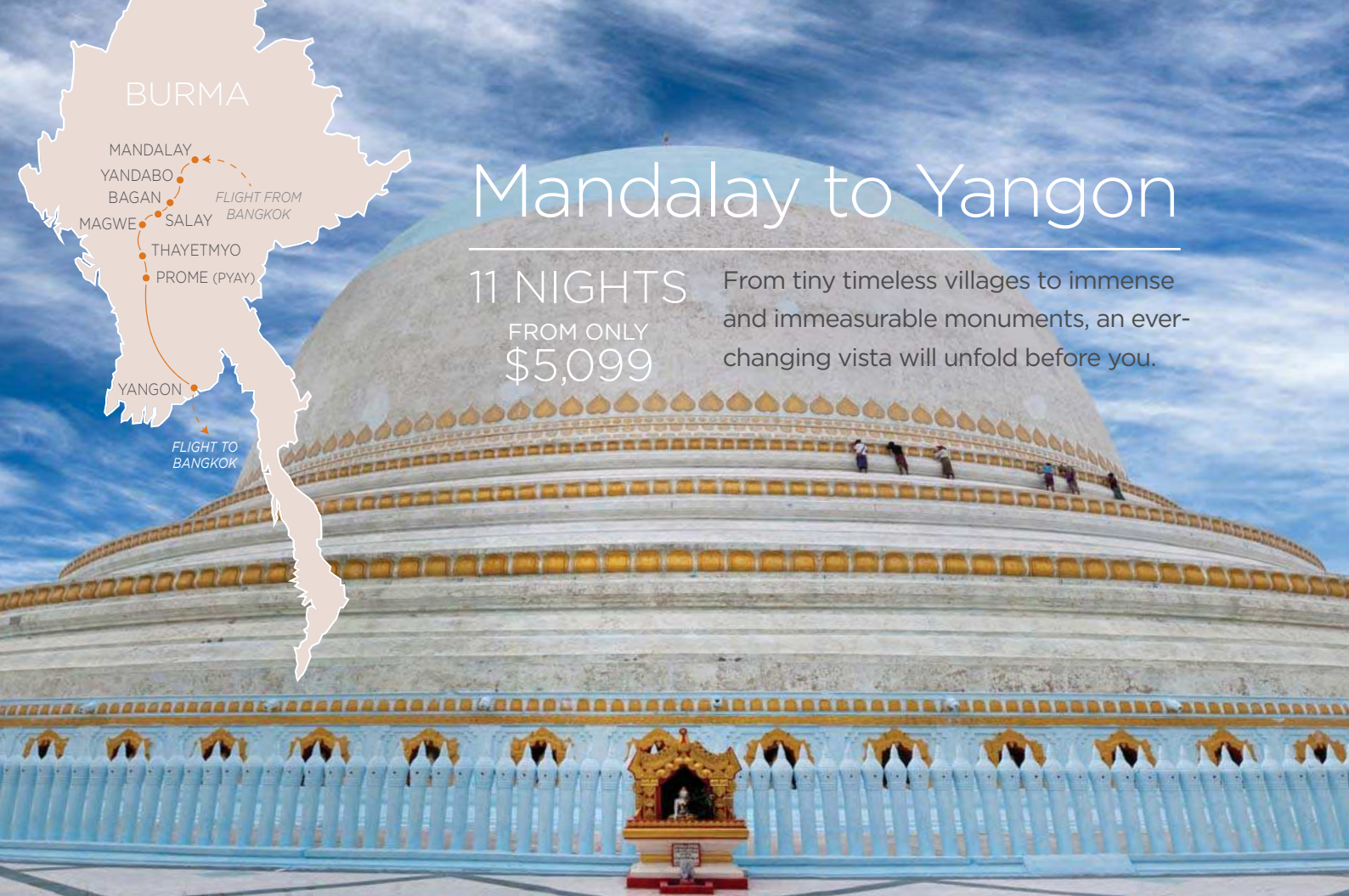
255 sq m

Guests in Deluxe Suites enjoy the most spacious of accommodation and elegant surroundings, complete with a private jacuzzi, balcony and extra lounge area.



395 sq m

Guests upgrading to a Suite or Deluxe Suite will receive complimentary 'welcome' champagne and laundry services



Mandalay to Yangon

11 NIGHTS
FROM ONLY
\$5,099

From tiny timeless villages to immense and immeasurable monuments, an ever-changing vista will unfold before you.

Australia — Bangkok — Mandalay (L,D)

DAY 1

Fly with Thai Airways to Mandalay via Bangkok*. Upon arrival at Mandalay International Airport, meet your local guide and transfer to the Mandalay Hill Resort. Today, visit the Mahamuni Pagoda and traditional Burmese workshops. After lunch, visit the Mahamuni Pagoda and traditional Burmese workshops. We then visit Kuthodaw Pagoda, home to 'the world's largest book'. We then head to the top of Mandalay Hill as the sun begins to set to enjoy magnificent views of the city and Irrawaddy River. Enjoy a welcome dinner tonight at the Mandalay Hill Resort.

Mandalay, Ava (B,L)

DAY 2

This morning, explore Sagaing. Covered with 600 pagodas and monasteries, it is home to 3000 monks. Continue south to Ava, the capital in the 14-18th centuries. Enjoy a tour by horse and cart to visit the old wooden Bagaya Monastery and the remains of the Royal Palace and Fort.

Mandalay, Amarapura

Embark RV Cruiseco Explorer (B,L,D)

DAY 3

En route to Gawein Jetty, stop at Amarapura to stroll along the 200 year old teak U Bein Bridge. Then, visit Mahagandayon monastery where over 1000 monks reside, before embarking Cruiseco Explorer. Cast off and enjoy scenic cruising for the rest of the day.

Yandabo (B,L,D)

DAY 4

This morning, arrive at Yandabo, a village famous for its pottery and also where the peace treaty of the First Anglo-Burmese war was signed in 1826. Visit the local school and monastery and then continue cruising downstream with an afternoon stop at Shwe Pyi Thar village. Enjoy dinner onboard with a Burmese Puppet Show performance on the sundeck. Moor overnight midstream.

Bagan (B,L,D)

DAY 5

Today, enjoy a full day visit of the most significant pagodas and temples of the 2,000 listed around Bagan. Dine on board for lunch and in the afternoon continue the exploration of the archeological area. In the evening, enjoy a meal onboard or in a local restaurant.

Bagan, Tan Kyi Mountain (B,L,D)

DAY 6

Explore some of Bagan's local markets selling wood carvings, fabrics and rattan products. Alternatively, guests can hire a horse cart and explore the site on their own or enjoy a balloon flight over Bagan (optional — surcharge applies, see page 24). After lunch, continue downstream to the village of Tan Kyi. Reach the mountaintop by jeep and enjoy a sunset over the Bagan plains.

Prices include \$180 air taxes (subject to change). Prices exclude accommodation in Bangkok made necessary by flight schedules. Some departure flights may leave Australia the day before. Please note itineraries are subject to change without notice. Please check with your Travel agent regarding flight options with Singapore Airlines departing from Adelaide.

† Earlybird fares may be withdrawn at any time without notice. Ask your Cruiseco travel agent for details.

Salay, Magwe (B,L,D) DAY 7

Visit Salay this morning and discover the Youqson Kyaung wooden monastery, colonial buildings and Bagan-era monuments such as Payathonzu and the Shinpinsarkyo Paya. Back to the ship for lunch and continue south to Magwe. In the late afternoon visit Myat Than Lun Paya, a 1929 built pagoda.

Thayetmyo (B,L,D) DAY 8

Today continue downstream to Thayetmyo. Explore the town, visiting the local market, the oldest golf course of Myanmar, as well as several colonial homes constructed during the British colonisation of Burma.

Yangon (Pyay) (B,L,D) DAY 9

Arrive early morning in Yangon (Pyay) and drive to Thayekhittaya, an ancient Pyu city that ruled the area between the 5th and the 9th century AD. Visit the Shwesandaw Pagoda complex, and the Wunchataung Paya (Apology Mountain Pagoda) a fabulous vantage point of the Shwesandaw Pagoda and surrounding mountains.

Yangon (Pyay), Yangon (B,L,D) DAY 10

After breakfast, we will drive by coach from Pyay to Yangon, stopping along the way for a picnic lunch. The drive is approximately 6.5 hours through the serene and beautiful countryside of Burma. On the drive through the region you will see kilometres upon kilometres of rural scenes with green paddy fields, cattle, and local markets. Upon arrival in Yangon you will be transferred to the Chatrium Hotel, and the afternoon is at your leisure. This evening enjoy dinner at the hotel.

Yangon (B,L) DAY 11

After breakfast, we set off for sightseeing in Yangon, starting with a short tour of downtown. You'll travel down streets lined with faded colonial buildings, past historic landmarks and to Sule Paya one of the city's iconic sites. We will this visit China town and Bogyoke Market. After lunch at a local restaurant, we continue sightseeing to Kyaukhtatgyi Pagoda, home to a 70-meter long reclining Buddha and stop by Kandawagyi Park one of central Yangon's greenest spots. We then continue to Shwedagon Pagoda the most revered Buddhist temple in Myanmar. This evening is at your leisure.

Yangon — Bangkok — Australia (B) DAY 12

Today is at your leisure before being transferred to Yangon airport for your flight to Australia with Thai Airways.

Novotel Bangkok Stopover

Novotel offers a 24 Hour Flexi stay. Guests arrive anytime (no set check-in) and check-out 24 hours later. Next to the airport, its just a 5-minute stroll via air-conditioned walkway or shuttle van.

Facilities include five restaurants and bars, VOUS Spa, outdoor swimming pool and fitness centre.

Inclusions: 1 night accommodation (includes all taxes) in a superior twin share room • international buffet breakfast complimentary 24 hour shuttle service from airport.

\$119* Per person • \$228* Single occupancy

*Prices are subject to change. Rates available on select dates only. Alternative dates will be charged a surcharge. Additional surcharge may be required over peak and holiday periods.

11 Nights • Mandalay to Yangon

Departing	Per person, twin share	Single person
27 Sep '15	\$5,099	\$8,099
11 Oct	\$5,099	\$8,099
25 Oct	\$5,399	\$8,399
08 Nov	\$5,399	\$8,399
22 Nov	\$5,399	\$8,399
06 Dec	\$5,099	\$8,099
20 Dec	\$5,099	\$8,099
03 Jan '16	\$5,099	\$8,099
17 Jan	\$5,099	\$8,099
31 Jan	\$5,099	\$8,099
14 Feb	\$5,099	\$8,099
28 Feb	\$5,099	\$8,099
13 Mar	\$5,099	\$8,099
27 Mar	\$5,099	\$8,099
25 Sep	\$5,099	\$8,099
09 Oct	\$5,399	\$8,399
23 Oct	\$5,399	\$8,399
06 Nov	\$5,399	\$8,399
20 Nov	\$5,399	\$8,399
04 Dec	\$5,099	\$8,099
18 Dec	\$5,099	\$8,099
01 Jan '17	\$5,099	\$8,099
15 Jan	\$5,099	\$8,099
29 Jan	\$5,099	\$8,099
12 Feb	\$5,099	\$8,099
26 Feb	\$5,099	\$8,099
12 Mar	\$5,099	\$8,099
26 Mar	\$5,099	\$8,099
09 Apr	\$5,099	\$8,099
23 Apr	\$5,099	\$8,099

UPGRADES

Upper Deck	Suite	Deluxe Suite
\$400 PP	\$600 PP	\$1,000 PP

Prices are subject to change

EXCEPTIONAL LUXURY, OUTSTANDING VALUE

Your Cruiseco Explorer cruise tour includes*..

- Return Economy Class airfare from Sydney, Melbourne, Brisbane or Perth on Thai Airways (includes air taxes)
- 7 night luxury river cruise onboard **CRUISECO EXPLORER** in a french balcony cabin between Mandalay and Yangon, including onboard gratuities, all meals, local beers, soft drinks and wine is served with lunch and dinner
- Deluxe hotel accommodation: 2 nights at Mandalay Hill Resort in Mandalay, 2 nights at the Chatrium Hotel in Yangon.
- Extensive sightseeing with expert local guides and all transfers
- Breakfast daily, lunch and dinner as specified in the itinerary

* See conditions bottom of page 8

Add more to your adventure

see our **Extensions** page 20-25



Yangon to Mandalay

11 NIGHTS
FROM ONLY
\$5,099

Ancient Yangon sits amidst lush teak forests while Mandalay is a striking combination of modern and classic cultural sights.

Australia — Bangkok — Yangon (D)

DAY 1

Fly with Thai Airways to Yangon via Bangkok*. Upon arrival at Yangon International Airport, meet your guide and transfer to the Chatrium Hotel. This afternoon is at your leisure and this evening enjoy a welcome dinner at the hotel.

Yangon (B,L)

DAY 2

After breakfast, you will set off for sightseeing in Yangon, starting with a short tour of downtown. You'll start at the post office—a lovely historic building, and walk to Sule Paya. We then visit Little India and Chinatown, followed by a visit to Kyaukhtatgyi Pagoda, home to a 70-meter long reclining Buddha. After lunch at a local restaurant we continue to Kandawagyi Park, one of central Yangon's greenest spots. From here you will continue to Shwedagon Pagoda the most revered Buddhist temple in Myanmar. The rest of the evening is at your leisure.

Yangon, Yangon (Pyay)

Embark RV Cruiseco Explorer (B,L,D)

DAY 3

Today we have an early morning departure from the hotel at approximately 6:30 am. We will drive by coach from Yangon to Pyay, with comfort stops and snacks provided along the way. The drive is approximately 6.5 hours through the serene and beautiful countryside of Burma. On the drive through the region you will see kilometres upon kilometres of rural scenes with green paddy fields, cattle, and local markets. Upon arrival in Pyay embark Cruiseco Explorer and enjoy lunch onboard.

In the afternoon, drive to Thayekhittaya, an ancient Pyu city that ruled in this area between the 5th and the 9th century AD. In central Yangon, visit the Shwesandaw Pagoda complex, and the Wunchataung Paya (Apology Mountain Pagoda) a fabulous vantage point of the Shwesandaw Pagoda and surrounding mountains. This afternoon, set sail on the Irrawaddy River.

Thayetmyo (B,L,D)

DAY 4

This morning, explore the town, visiting the local market, the oldest golf course of Myanmar, as well as several colonial homes constructed during the British colonisation of Burma.

Magwe (B,L,D)

DAY 5

Arrive at Magwe and visit Myat Than Lun Paya, a 1929 built pagoda of gold solid bricks set on a hilltop with a beautiful panoramic vantage point.

Salay, Tan Kyi Mountain (B,L,D)

DAY 6

Visit Salay this morning, a village founded in the 13th century with Bagan-era shrines, beautiful 19th century teak monasteries and preserved British colonial buildings. After lunch, continue upstream to the village of Tan Kyi. Reach the mountaintop by jeep and enjoy a sunset over the Bagan plains.

Bagan (B,L,D)

DAY 7

Today, enjoy a full day visit of the most significant pagodas and temples of the 2,000 listed around Bagan. Dine on board for lunch and in the afternoon continue the exploration of the archaeological area. Sunset will be atop one of the temples

Prices include \$180 air taxes (subject to change). Prices exclude accommodation in Bangkok made necessary by flight schedules. Some departure flights may leave Australia the day before. Please note itineraries are subject to change without notice. Please check with your Travel agent regarding flight options with Singapore Airlines departing from Adelaide.

† Earlybird fares may be withdrawn at any time without notice. Ask your Cruiseco travel agent for details.

(subject to government approval) with a champagne toast. Dinner is on board the Cruiseco Explorer.

Bagan, River Village (B,L,D) DAY 8

Explore some of Bagan's local markets selling wood carvings, fabrics and rattan products. Alternatively passengers can hire a horse cart and explore the site on their own or enjoy an early morning Balloon Flight over Bagan (optional – surcharge applies, see page 24). This afternoon, sail to Shwe Pyi Thar village, a typical village along the Irrawaddy River. This evening, dinner is followed by a Puppet Show performance.

Yandabo (B,L,D) DAY 9

This morning, arrive at Yandabo, a village famous for its pottery. It is also where the peace treaty of the First Anglo-Burmese war was signed in 1826. Go ashore, stopping at workshops to witness local crafts and pottery firing. Visit the local school and monastery. Cruise upstream and moor overnight midstream.

Mandalay, Amarapura Disembark RV Cruiseco Explorer (B,L) DAY 10

After breakfast, disembark Cruiseco Explorer and visit Mahagandayon monastery where over 1000 monks reside. En route to Mandalay, stop at Amarapura to stroll along the 200 year old teak U Bein Bridge. We then head to a local restaurant for lunch, and afterwards continue to the hotel to check in

For those who wish to continue sightseeing in the afternoon we begin with a visit to Mandalay Hill, followed by a visit to Kuthodaw Pagoda, home to 'the world's largest book'. The remainder of the evening is at your leisure.

Mandalay, Sagaing (B,L,D) DAY 11

This morning, visit Sagaing. Covered with 600 white painted pagodas and monasteries, it's home to 3000 monks. Visit various pagodas, a local market and a small pottery village.

Following this, continue south to Ava, the capital in the 14-18th centuries. Enjoy a tour of Ava by horse and cart to visit the old wooden Bagaya Monastery and the remains of the Royal Palace and Fort. Return this afternoon for dinner at the hotel.

Mandalay – Bangkok – Australia (B) DAY 12

Breakfast is included at the hotel this morning and the rest of the day is at your leisure until transferring to Mandalay Airport for your journey home with Thai Airways*.

Novotel Bangkok Stopover

Novotel offers a 24 Hour Flexi stay. Guests arrive anytime (no set check-in) and check-out 24 hours later. Next to the airport, its just a 5-minute stroll via air-conditioned walkway or shuttle van.

Facilities include five restaurants and bars, VOUS Spa, outdoor swimming pool and fitness centre.

Inclusions: 1 night accommodation (includes all taxes) in a superior twin share room • international buffet breakfast complimentary 24 hour shuttle service from airport.

\$119* Per person • \$228* Single occupancy

*Prices are subject to change. Rates available on select dates only. Alternative dates will be charged a surcharge. Additional surcharge may be required over peak and holiday periods.

11 Nights • Yangon to Mandalay

Departing	Per person, twin share	Single person
04 Oct '15	\$5,099	\$8,099
18 Oct	\$5,399	\$8,399
01 Nov	\$5,399	\$8,399
15 Nov	\$5,399	\$8,399
29 Nov	\$5,399	\$8,399
13 Dec	\$5,099	\$8,099
27 Dec	\$5,099	\$8,099
10 Jan '16	\$5,099	\$8,099
24 Jan	\$5,099	\$8,099
07 Feb	\$5,099	\$8,099
21 Feb	\$5,099	\$8,099
06 Mar	\$5,099	\$8,099
20 Mar	\$5,099	\$8,099
03 Apr	\$5,099	\$8,099
18 Sep	\$5,099	\$8,099
02 Oct	\$5,099	\$8,099
16 Oct	\$5,399	\$8,399
30 Oct	\$5,399	\$8,399
13 Nov	\$5,399	\$8,399
27 Nov	\$5,099	\$8,099
11 Dec	\$5,099	\$8,099
25 Dec	\$5,099	\$8,099
08 Jan '17	\$5,099	\$8,099
22 Jan	\$5,099	\$8,099
05 Feb	\$5,099	\$8,099
19 Feb	\$5,099	\$8,099
05 Mar	\$5,099	\$8,099
19 Mar	\$5,099	\$8,099
02 Apr	\$5,099	\$8,099
16 Apr	\$5,099	\$8,099

UPGRADES

Upper Deck	Suite	Deluxe Suite
\$400 PP	\$600 PP	\$1,000 PP

Prices are subject to change

EXCEPTIONAL LUXURY, OUTSTANDING VALUE

Your Cruiseco Explorer cruise tour includes*...

- Return Economy Class airfare from Sydney, Melbourne, Brisbane or Perth on Thai Airways (includes air taxes)
- 7 night luxury river cruise onboard **CRUISECO EXPLORER** in a french balcony cabin between Yangon and Mandalay, including onboard gratuities, all meals, local beers, soft drinks and wine is served with lunch and dinner
- Deluxe hotel accommodation: 2 nights at the Chatrium Hotel in Yangon, 2 nights at Mandalay Hill Resort in Mandalay
- Extensive sightseeing with expert local guides and all transfers
- Breakfast daily, lunch and dinner as specified in the itinerary

* See conditions bottom of page 10

Discover more

of Burma's fascinations, see our **Extensions** page 20-25



Australia — Bangkok — Mandalay — Heho — Inle Lake (D) DAY 1

Fly with Thai Airways to Yangon via Bangkok*, then transfer to your domestic flight to Heho. A scenic one-hour drive leads to Nyaung Shwe, the gateway village to Inle Lake. Along the way, stop at the wooden Shwe Yan Pyay Monastery which features beautiful carvings and a collection of Buddha images. If time permits, enjoy a short walk through one of the lakeside villages before dinner at the hotel.

Inle Lake — Sagar Excursion (B,L,D) DAY 2

Set off this morning for your lakeside hotel for Sagar, the far southern region of Inle Lake. Very few tourists make the trip down to this region yet it is one of the most beautiful places in the Shan State with the mountains forming a backdrop for the small villages and fishermen on the water. The area was only recently opened to tourists in 2003.

B: breakfast L: lunch D: dinner

The boat journey takes 2.5–3 hours but is full of fabulous views and home to many unique species of birds, both indigenous and migratory. Sit back, relax and enjoy the ride!

Upon arriving in Sagar the main highlight for many travelers are the ‘sunken’ stupas of Sagar—108 stupas from the 16–17th centuries that are partially underwater for a few months a year. There is also a local monastery and village that can be visited here.

Continue to the village of Thaya Gone, home to Pa-Oh, Shan and Inthar people and known for its production of local rice wine. In Thaya Gone there is also the chance to climb to the top of a small hill which there are great views of the lake and surrounding villages.

Another stop will be made in Sae Khaung Pottery Village to see the crafting of oil and water pots as well as the natural, underground kilns used by the villagers. On the western shores of the Sagar area is Tar Kaung, a series of more than 200 stupas which also make a fabulous photo stop.

Afterwards the boat will begin its journey back to the main section of Inle Lake. Traveling back in the afternoon the light



Inle Lake to Yangon

14 NIGHTS

FROM ONLY
\$7,009

Gaze in awe at richly frescoed, sacred shrines and wander the corridors of temples once denied to the outside world.



has shifted and the route looks much different on the return, with different activities occurring on the water and in the villages. Rice noodles can be seen drying in the sun, spun cotton is hung out to dry and kids are returning from school at this time of day.

You'll reach your hotel early this evening in time to freshen up and watch the sunset.

Inle Lake (B,L,D) DAY 3

After breakfast, visit the lake's morning market. The market rotates its location around the lake's villages in a 5 day rhythm and is visited by lake inhabitants and surrounding hill tribes who come to sell and trade their wares. (Note: market is daily except on dark moon day and full moon day).

Continue along Inle Lake, passing villages built on stilts over the lake, inhabited by the local Intha people. Observe the leg-rowing fishermen and see their floating gardens built up from strips of water hyacinth and mud and anchored to the bottom with bamboo poles. Continue to Phaung Daw Oo Pagoda, the lake's main sanctuary, which contains five sacred Buddha images covered in gold leaf.

Prepare your lunch with a local family! This cooking course is a fun and interesting way to learn about the traditional flavors and preparation techniques of Burmese Cuisine. Join a local Inthar family in their kitchen to cook local dishes then sit on the floor at a round table and dine in the local way.

Delight in even more

of the exotica that is Burma, see our **Extensions** page 20-25

Explore the local crafts of Inle Lake with a stop at the weaving village of Inpawkhone and a *cheroot* factory, where the typical Burmese cigars are made by hand. Return to your hotel in the mid afternoon.

Inle Lake — Heho — Mandalay (B,L) DAY 4

This morning transfer to Heho for the flight to Mandalay where upon landing you will transfer to the Mandalay Hill Resort. After lunch, visit the Mahamuni Pagoda and traditional Burmese workshops. After lunch, visit the Mahamuni Pagoda and traditional Burmese workshops. We then visit Kuthodaw Pagoda, home to 'the world's largest book'. We then head to the top of Mandalay Hill as the sun begins to set to enjoy magnificent views of the city and Irrawaddy River. Enjoy a welcome dinner tonight at the Mandalay Hill Resort.

Mandalay, Ava (B,L) DAY 5

This morning, explore Sagaing. Covered with 600 pagodas and monasteries, it is home to 3000 monks. Continue south to Ava, the capital in the 14-18th centuries. Enjoy a tour by horse and cart to visit the old wooden Bagaya Monastery and the remains of the Royal Palace and Fort.

Mandalay, Amarapura Embark RV Cruiseco Explorer (B,L,D) DAY 6

En route to Gawein Jetty, stop at Amarapura to stroll along the 200 year old teak U Bein Bridge. Then, visit Mahagandayon monastery where over 1000 monks reside, before embarking Cruiseco Explorer. Cast off and enjoy scenic cruising for the rest of the day.



Yandabo (B,L,D)

DAY 7

This morning, arrive at Yandabo, a village famous for its pottery and also where the peace treaty of the First Anglo-Burmese war was signed in 1826. Visit the local school and monastery and then continue cruising downstream with an afternoon stop at Shwe Pyi Thar village. Enjoy dinner onboard with a Burmese Puppet Show performance on the sundeck. Moor overnight midstream.

Bagan (B,L,D)

DAY 8

Today, enjoy a full day visit of the most significant pagodas and temples of the 2,000 listed around Bagan. Dine on board for lunch and in the afternoon continue the exploration of the archeological area. In the evening, enjoy a meal onboard or in a local restaurant.

Bagan, Tan Kyi Mountain (B,L,D)

DAY 9

Explore some of Bagan's local markets selling wood carvings, fabrics and rattan products. Alternatively, guests can hire a horse cart and explore the site on their own or enjoy a balloon flight over Bagan (optional—surcharge applies, see page 24). After lunch, continue downstream to the village of Tan Kyi. Reach the mountaintop by jeep and enjoy a sunset over the Bagan plains.

Salay, Magwe (B,L,D)

DAY 10

Visit Salay this morning and discover the Youqson Kyaung wooden monastery, colonial buildings and Bagan-era

monuments such as Payathonzu and the Shinpinsarkyo Paya. Back to the ship for lunch and continue south to Magwe. In the late afternoon visit Myat Than Lun Paya, a 1929 built pagoda.

Thayetmyo (B,L,D)

DAY 11

Today continue downstream to Thayetmyo. Explore the town, visiting the local market, the oldest golf course of Myanmar, as well as several colonial homes constructed during the British colonisation of Burma.

Yangon (Pyay) (B,L,D)

DAY 12

Arrive early morning in Yangon (Pyay) and drive to Thayekhittaya, an ancient Pyu city that ruled the area between the 5th and the 9th century AD. Visit the Shwesandaw Pagoda complex, and the Wunchataung Paya (Apology Mountain Pagoda) a fabulous vantage point of the Shwesandaw Pagoda and surrounding mountains.

Yangon (Pyay), Yangon (B,L,D)

DAY 13

After breakfast, we will drive by coach from Pyay to Yangon, stopping along the way for a picnic lunch. The drive is approximately 6.5 hours through the serene and beautiful countryside of Burma. On the drive through the region you will see kilometres upon kilometres of rural scenes with green paddy fields, cattle, and local markets. Upon arrival in Yangon you will be transferred to the Chatrium Hotel, and the afternoon is at your leisure. This evening enjoy dinner at the hotel.

Prices include \$180 air taxes (subject to change). Prices exclude accommodation in Bangkok made necessary by flight schedules. Some departure flights may leave Australia the day before. Please note itineraries are subject to change without notice. Please check with your Travel agent regarding flight options with Singapore Airlines departing from Adelaide.

† Earlybird fares may be withdrawn at any time without notice. Ask your Cruiseco travel agent for details.



14 Nights • Inle Lake to Yangon

Departing	Per person, twin share	Single person
24 Sep '15	\$7,009	\$10,485
08 Oct	\$7,009	\$10,485
22 Oct	\$7,309	\$10,785
05 Nov	\$7,309	\$10,785
19 Nov	\$7,309	\$10,785
03 Dec	\$7,009	\$10,485
17 Dec	\$7,009	\$10,485
31 Dec	\$7,009	\$10,485
14 Jan	\$7,009	\$10,485
28 Jan '16	\$7,009	\$10,485
11 Feb	\$7,009	\$10,485
25 Feb	\$7,009	\$10,485
10 Mar	\$7,009	\$10,485
24 Mar	\$7,009	\$10,485
22 Sep	\$7,009	\$10,485
06 Oct	\$7,309	\$10,785
20 Oct	\$7,309	\$10,785
03 Nov	\$7,309	\$10,785
17 Nov	\$7,309	\$10,785
01 Dec	\$7,009	\$10,485
15 Dec	\$7,009	\$10,485
29 Dec	\$7,009	\$10,485
12 Jan '17	\$7,009	\$10,485
26 Jan	\$7,009	\$10,485
09 Feb	\$7,009	\$10,485
23 Feb	\$7,009	\$10,485
09 Mar	\$7,009	\$10,485
23 Mar	\$7,009	\$10,485
06 Apr	\$7,009	\$10,485
20 Apr	\$7,009	\$10,485

UPGRADES

Upper Deck	Suite	Deluxe Suite
\$400 PP	\$600 PP	\$1,000 PP

Prices are subject to change

Yangon (B,L)

DAY 14

After breakfast, we set off for sightseeing in Yangon, starting with a short tour of downtown. You'll travel down streets lined with faded colonial buildings, past historic landmarks and to Sule Paya one of the city's iconic sites. We will this visit China town and Bogyoke Market. After lunch at a local restaurant, we continue sightseeing to Kyaukhtatgyi Pagoda, home to a 70-meter long reclining Buddha and stop by Kandawgyi Park one of central Yangon's greenest spots. We then continue to Shwedagon Pagoda the most revered Buddhist temple in Myanmar. This evening is at your leisure.

Yangon — Bangkok — Australia (B)

DAY 15

Today is at your leisure before being transferred to Yangon airport for your flight to Australia with Thai Airways.

Novotel Bangkok Stopover

Novotel offers a 24 Hour Flexi stay. Guests arrive anytime (no set check-in) and check-out 24 hours later. Next to the airport, its just a 5-minute stroll via air-conditioned walkway or shuttle van.

Facilities include five restaurants and bars, VOUS Spa, outdoor swimming pool and fitness centre.

Inclusions: 1 night accommodation (includes all taxes) in a superior twin share room • international buffet breakfast complimentary 24 hour shuttle service from airport.

\$119* Per person • \$228* Single occupancy

EXCEPTIONAL LUXURY, OUTSTANDING VALUE

Your Cruiseco Explorer cruise tour includes*..

- Return Economy Class airfare from Sydney, Melbourne, Brisbane or Perth on Thai Airways (includes air taxes)
- Economy class return airfare to Heho from Mandalay including taxes (surcharge applies for flights to/from Yangon)
- 7 night luxury river cruise onboard **CRUISECO EXPLORER** in a french balcony cabin between Inle Lake and Yangon including onboard gratuities, all meals, local beers, soft drinks and wine served with lunch and dinner
- Deluxe hotel accommodation: 3 nights at Prestine Lotus Spa Resort Inle Lake, 2 nights at Mandalay Hill Resort in Mandalay, 2 nights at the Chatrium Hotel in Yangon.
- Extensive sightseeing with expert local guides and all transfers
- Breakfast daily, lunch and dinner as specified in the itinerary

* See conditions bottom of page 14

*Prices are subject to change. Rates available on select dates only. Alternative dates will be charged a surcharge. Additional surcharge may be required over peak and holiday periods.



Australia — Bangkok — Mandalay (L,D)

DAY 1

Fly with Thai Airways to Mandalay via Bangkok*. Upon arrival at Mandalay International Airport, meet your guide and transfer to the Mandalay Hill Resort. This evening enjoy a welcome dinner at the hotel.

Mandalay (B,L,D)

DAY 2

After breakfast, transfer by coach to Gawien Jetty to embark Cruiseco Explorer. Set sail on the Irrawaddy River and enjoy scenic cruising for the rest of the day.

Kyauk Myaung (B,L,D)

DAY 3

After breakfast, visit the pottery-making village of Kyauk Myaung and see the production stages of the famous 50 Gallons pots. Then embark the ship for a relaxing day onboard. Moor overnight midstream.

B: breakfast L: lunch D: dinner

Tagaung (B,L,D)

DAY 4

Explore the ancient city of Tagaung including the shrine of Bo Bo Gyi, a famous spirit. Also discover the archaeological area and fortifications before continuing upstream for the remainder of the day. Moor overnight midstream.

Shwegu and the Second Defile (B,L,D)

DAY 5

Sail upstream to view the spectacular Second Defile, the largest of the Irrawaddy gorges, with its magnificent cliffs reaching down the narrow channel. In the afternoon sail downstream to Katha.

Note: In case of low water levels the excursion will be done by local speed boat.

Katha (B,L,D)

DAY 6

The colonial town of Katha is where, in 1942, hundreds of Irrawaddy Flotilla Company ships were scuttled before the Japanese could seize them. Explore the old streets and the market by trishaw and visit an elephant logging camp.



Mandalay to Yangon

17 NIGHTS

FROM ONLY
\$6,999

Impossibly large monuments and places of worship contrast with the friendliest of people living the most humble of lives.



Mingun (B,L,D)

DAY 7

Continue cruising downstream and stop to explore a typical river village. In the afternoon, arrive in Mingun. Visit the unfinished pagoda and the largest working bell in the world. Tonight, enjoy a drama performance by the Mandalay Arts School on the sundeck of the ship.

Ava, Amarapura (B,L,D)

DAY 8

This afternoon explore Ava by horse-cart, visiting the beautiful 200 year old teak Bagaya Kyaung Monastery, Nanmyin Watchtower and the Me Nu Ok Kyaung Monastery. Then travel by sampan and coach to Amarapura to visit the U-Bein Bridge and silk factories.

Monywa (Hpowindaung, Shwebadaung Caves) (B,L,D) DAY 9

This morning, depart early for Monywa to visit the Hpowindaung and Shwebadaung Caves. After lunch, visit the Sambuddhai Kat Kyaw Pagoda with more than 500,000 Buddha images. Then transfer to Sagaing where the ship will be waiting.

Yandabo (B,L,D)

DAY 10

This morning, arrive at Yandabo, a village famous for its pottery. It is also where the peace treaty of the First Anglo-Burmese war was signed in 1826. Go ashore, stopping at workshops to witness local crafts and pottery firing. Visit the local school and monastery. Continue cruising downstream with an afternoon stop at Shwe Pyi Thar village. Moor overnight midstream.



Explore more of this wondrously enchanting kingdom

see our **Extensions** page 20-25



Bagan (B,L,D)

DAY 11

Today, enjoy a full day visit of the most significant pagodas and temples of the 2,000 listed around Bagan. Dine on board for lunch and in the afternoon continue the exploration of the archeological area. In the evening, enjoy a meal onboard or in a local restaurant.

Bagan, Tan Kyi Mountain (B,L,D)

DAY 12

This morning, explore some of Bagan's local markets selling wood carvings, fabrics and rattan products. Alternatively, passengers can hire a horse cart and explore the site on their own or enjoy an early morning balloon flight over Bagan (optional—surcharge applies, see page 24). After lunch, continue downstream to the village of Tan Kyi. Reach the mountaintop by jeep and enjoy a sunset over the Bagan plains.



Salay, Magwe (B,L,D)

DAY 13

This morning, visit Salay, and explore the Yougson Kyaung wooden monastery, the colonial buildings and Bagan-era monuments such as Payathonzu and the Shinpinsarkyo Paya. Return to the ship for lunch and continue south to Magwe. Later this afternoon, visit Myat Than Lun Paya, a pagoda built in 1929.

Thayetmyo (B,L,D)

DAY 14

Sail downstream today to Thayetmyo, a colonial town. Explore the local market as well as several colonial homes constructed during the British colonisation of Burma.

Yangon (Pyay) (B,L,D)

DAY 15

Arrive early morning in Yangon (Pyay) and drive to Thayekhittaya, an ancient Pyu city that ruled the area between the 5th and the 9th century AD. In central Yangon, visit the Shwesandaw Pagoda complex, and the Wunchataung Paya (Apology Mountain Pagoda) a fabulous vantage point of the Shwesandaw Pagoda and the surrounding mountains.

Yangon (Pyay), Yangon (B,L,D)

DAY 16

After breakfast, we will drive by coach from Pyay to Yangon, stopping along the way for a picnic lunch. The drive is approximately 6.5 hours through the serene and beautiful countryside of Burma. On the drive through the region you will see kilometres upon kilometres of rural scenes with green paddy fields, cattle, and local markets. Upon arrival in Yangon

Prices include \$180 air taxes (subject to change). Prices exclude accommodation in Bangkok made necessary by flight schedules. Some departure flights may leave Australia the day before. Please note itineraries are subject to change without notice. Please check with your Travel agent regarding flight options with Singapore Airlines departing from Adelaide.

† Earlybird fares may be withdrawn at any time without notice. Ask your Cruiseco travel agent for details.



you will be transferred to the Chatrium Hotel, and the afternoon is at your leisure. This evening enjoy dinner at the hotel.

Yangon (B,L) DAY 17

After breakfast, we set off for sightseeing in Yangon, starting with a short tour of downtown. You'll travel down streets lined with faded colonial buildings, past historic landmarks and to Sule Paya one of the city's iconic sites. We will this visit China town and Bogyoke Market. After lunch at a local restaurant, we continue sightseeing to Kyaukhtatgyi Pagoda, home to a 70-meter long reclining Buddha and stop by Kandawgyi Park one of central Yangon's greenest spots. We then continue to Shwedagon Pagoda the most revered Buddhist temple in Myanmar. This evening is at your leisure.

Yangon — Bangkok — Australia (B) DAY 18

Today is at your leisure before being transferred to Yangon Airport for your flight to Australia with Thai Airways*.

Novotel Bangkok Stopover

Novotel offers a 24 Hour Flexi stay. Guests arrive anytime (no set check-in) and check-out 24 hours later. Next to the airport, its just a 5-minute stroll via air-conditioned walkway or shuttle van.

Facilities include five restaurants and bars, VOUS Spa, outdoor swimming pool and fitness centre.

Inclusions: 1 night accommodation (includes all taxes) in a superior twin share room • international buffet breakfast complimentary 24 hour shuttle service from airport.

\$119* Per person • \$228* Single occupancy

*Prices are subject to change. Rates available on select dates only. Alternative dates will be charged a surcharge. Additional surcharge may be required over peak and holiday periods.

17 Nights • Mandalay to Yangon

Departing	Per person, twin share	Single person
31 Aug '15	\$6,999	\$12,999
13 Sep [#]	\$6,999	\$12,999
11 Apr '16	\$6,999	\$12,999
24 Apr [#]	\$6,999	\$12,999
05 Sep	\$6,999	\$12,999
30 Apr '17 [#]	\$6,999	\$12,999

UPGRADES

Upper Deck	Suite	Deluxe Suite
\$400 PP	\$600 PP	\$1,000 PP

Prices are subject to change
[#]Cruise operates in opposite direction

EXCEPTIONAL LUXURY, OUTSTANDING VALUE

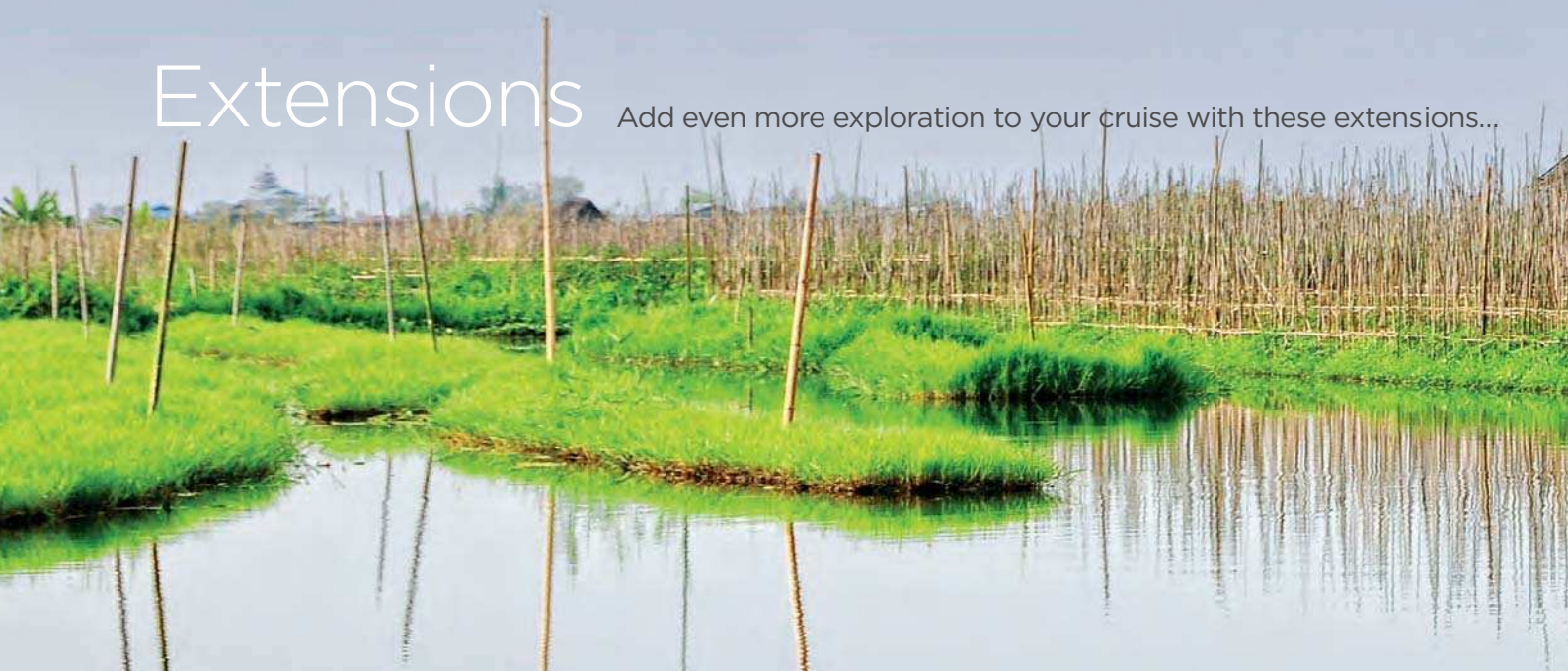
Your Cruiseco Explorer cruise tour includes*...

- Return Economy Class airfare from Sydney, Melbourne, Brisbane or Perth on Thai Airways (includes air taxes)
- 14 night luxury river cruise onboard **CRUISECO EXPLORER** in a french balcony cabin between Mandalay and Yangon, including onboard gratuities, all meals, local beers, soft drinks and wine is served with lunch and dinner
- Deluxe hotel accommodation: 1 night at Mandalay Hill Resort in Mandalay, 2 nights at the Chatrium Hotel in Yangon.
- Extensive sightseeing with expert local guides and all transfers
- Breakfast daily, lunch and dinner as specified in the itinerary

* See conditions bottom of page 18

Extensions

Add even more exploration to your cruise with these extensions...



Inle Lake

EXTENSION

4 DAYS • 3 NIGHTS

Inclusions:

- 3 nights accommodation at the Prestine Lotus Spa Resort in the Inle Lotus Villa (villa on the lake)
- Meals as per itinerary
- Economy class return airfare to Heho from Mandalay including taxes (surcharge applies for flights to/from Yangon)
- Entrance fees for included sightseeing
- All land and boat transfers listed in the itinerary
- Private air-conditioned vehicles included for sightseeing and transfers, with a local English-speaking guide

Tour Price* *Please note: prices are subject to change*

\$1,918 Per person, twin share
\$2,388 Single supplement

Day 1 **Mandalay — Heho, Inle Lake** (L,D)

Fly from Mandalay to Heho and then be driven to Nyaung Shwe, the gateway village to Inle Lake. Along the way, stop at the wooden Shwe Yan Pyay Monastery which features beautiful carvings and a collection of Buddha images.

Should you arrive by a morning flight, have lunch at Viewpoint Restaurant in Nyaung Shwe before continuing on to your lakeside hotel. If time permits, enjoy a short walk through one of the lakeside villages before dinner at the hotel.

Day 2 **Inle Lake, Sagar Excursion** (B,L,D)

Set sail, this morning, to Sagar, the far southern region of Inle Lake. It is one of the most beautiful places in the Shan State with the mountains forming a backdrop for the small villages and fishermen on the water. The area was only recently opened to tourists in 2003.

Upon arriving in Sagar area there are several stops that will be made. The main highlight for many travellers are the 'sunken' stupas of Sagar—108 stupas from the 16-17th centuries that are partially underwater for a few months a year. There is also a local monastery and village that can be visited here.

Continue to the village of Thaya Gone, home to Pa-Oh, Shan and Inthar people and known for its production of local rice wine.



*Prices subject to change. Due to a very strong and continuous increase in demand for travelers to Myanmar, prices may increase without notice. Deposit is required to secure bookings and prices. Surcharges may apply for holiday periods. Please ask your Cruiseco travel agent for confirmed pricing and availability. Tour costs do not include fees for visas, meals other than those specified in the itinerary, or personal expenses.



Another stop will be made in Sae Khaung Pottery Village to see the crafting of oil and water pots as well as the natural, underground kilns used by the villagers. On the western shores of the Sagar area is Tar Kaung, a series of more than 200 stupas which also make a fabulous photo stop.

Afterwards the boat will begin its journey back to the main section of Inle Lake. Travelling back in the afternoon there are different activities occurring on the water and in the villages. Rice noodles can be seen drying in the sun, spun cotton is hung out to dry and kids are returning from school at this time of day. You'll reach your hotel early this evening in time to freshen up and watch the sunset.

Day 3 Inle Lake (B,L,D)

After breakfast, visit the lake's morning market. The market rotates its location around the lake's villages in a 5 day rhythm and is visited by lake inhabitants and surrounding hill tribes who come to sell and trade their wares. (Note: market is daily except on dark moon day and full moon day).

Continue along Inle Lake, passing villages built on stilts over the lake, inhabited by the local Intha people. Observe the leg-rowing fishermen and see their floating gardens. Visit Nga Hpe Chaung Monastery, which houses dozens of Shan Buddha

Images, but is more famous for its unique 'jumping cats' who jump through hoops in the air. Continue to Phaung Daw Oo Pagoda, the lake's main sanctuary.

Today, prepare lunch with a local family. This cooking course is a fun and interesting way to learn about the preparation of traditional and tantalising Burmese flavours.

Explore the local crafts of Inle Lake with a stop at the weaving village of Inpawkhone and a cheroot factory, where the typical Burmese cigars are made by hand.

Return to your hotel mid-afternoon.

Day 4 Inle Lake, Heho — Mandalay (B)

This morning transfer to Heho for the flight to Mandalay to meet your onward flight.





Ngapali Beach

EXTENSION

4 DAYS • 3 NIGHTS

Inclusions:

- 3 nights accommodation at the Sandoway Resort in a Beach Front Cottage with breakfast, lunch and dinner daily
- Economy Class return airfare to Thandwe from Yangon including taxes (surcharge applies for flights to/from Mandalay)
- All transfers listed in the itinerary in shared hotel transport

Tour Price* *Please note: prices are subject to change*

\$1,389 Per person, twin share

\$679 Single supplement

Program only available from October to April due to rain season closures. Beach Front Cottages are limited, should one not be available for your requested date an alternate property or room type will be offered.

Day 1 **Thandwe — Ngapali** (L,D)

Fly from Yangon to Thandwe Airport, where you will be greeted and transferred to Ngapali Beach, a 20 minute drive.

Ngapali Beach is a quiet 3-kilometer stretch of white sands lined by coconut palms. The warm, clear waters are perfect for water sports such as snorkeling and there are several small islands around which can be reached by boat.

Stay overnight in Ngapali at the Sandoway Resort where you will enjoy your own personal cottage, all in two storey design, with an open air verandah.

Days 2-3 **Ngapali** (B,L,D)

Enjoy two full days at leisure in Ngapali. Breakfast is served daily and there are exciting options for snorkelling, boat trips and bike rides.

Day 4 **Ngapali — Thandwe** (B)

After breakfast, enjoy a few more hours of relaxation before departing to Thandwe airport for your onward flight to Yangon.



*Prices subject to change. Due to a very strong and continuous increase in demand for travelers to Myanmar, prices may increase without notice. Deposit is required to secure bookings and prices. Surcharges may apply for holiday periods. Please ask your Cruiseco travel agent for confirmed pricing and availability. Tour costs do not include fees for visas, meals other than those specified in the itinerary, drinks, or personal expenses.



Day 1 **Mandalay, Pyin Oo Lwin** (L,D)

This morning, leave Mandalay for a scenic two-hour drive to the former British hill station of Pyin Oo Lwin (also known as Maymyo) located on a plateau 1,000m above sea level. Many reminders of the colonial era are still present in Pyin Oo Lwin, including brick and timber houses.

Pyin Oo Lwin, famous for its temperate climate, is home to many ethnic tribes as well as a considerable number of Nepalese and Hindu people who migrated during the British occupation. Take a traditional horse cart and carriage ride through town. Stop at the Botanical Gardens and enjoy the 432 leafy acres of diverse botanical species from around the world. The Gardens were established by Sir Harcourt Butler, former Governor of Burma.

Continue to the local market to see the colourful flowers and vegetables available.

Stay overnight at Hotel Pyin Oo Lwin.

Day 2 **Pyin Oo Lwin, Mandalay** (B,L,D)

After breakfast at the hotel, transfer to the railway station for a 2 hour train trip. The scenic journey crosses the famous Gokteik Viaduct which spans a 300-meter deep gorge in the Shan mountains. The views from the train are spectacular, so be sure to have your camera ready.

Alight at a small village to enjoy lunch before beginning the return drive to Mandalay.

Pyin Oo Lwin

EXTENSION

3 DAYS • 2 NIGHTS

Inclusions:

- 1 night accommodation Hotel Pyin Oo Lwin in a Deluxe Room twin share, 1 night accommodation Mandalay Hill Resort in a Deluxe twin share room with breakfast
- All transfers and excursions with private air-conditioned vehicles and English-speaking guide
- Train from Pyin Oo Lwin, excursions as per itinerary and all entrance fees

Tour Price* *Please note: prices are subject to change*

\$710 Per person, twin share

\$570 Single supplement

On the drive to Mandalay you will also stop at a small market selling flowers, vegetables and other products.

Continue the drive to your hotel in Mandalay, arriving in the early evening. Stay overnight at Mandalay Hill Resort.

Day 3 **Mandalay, departure** (B)

After breakfast, transfer to the airport for your onward travel.





Balloons over Bagan

OPTIONAL TOUR

MORE EXCITEMENT

Start your morning with the magic of a hot-air balloon flight over the plains of Bagan. As the sun rises you will be lifted effortlessly to float above the stupas and Irrawaddy River. In this breathtaking 45-minute adventure, Balloons over Bagan will reveal the majesty of the ancient temples that dot the landscape.

All of the equipment is manufactured in the UK and the pilots and technicians are UK-licensed pilots and public transport inspectors.

Don't miss this chance for a truly unforgettable experience!

Balloon Flight* *Please note: price is subject to change*

\$462 Per person

Available October to March only



Extra nights

EXTENSION

MORE LUXURY

Chatrium Hotel

Luxuriate in the splendour of a bygone era in this colonial-style 5-star hotel. Conveniently situated near Yangon's centre, you will relax and enjoy its warm hospitality and delight in the exquisite views of the magnificent Shwedagon Pagoda. Wood-accented decor, traditional fabrics and tapestries await you.

- Accommodation in a deluxe room, and breakfast daily.

Price* *Please note: prices are subject to change*

\$163 Per person, twin share

\$325 Single supplement

Private Transfer: Yangon, with English-speaking guide
Airport/hotel OR hotel/airport \$52 per person twin share/\$97 single

Mandalay Hill Resort

A full-featured resort hotel, it lies at the foot of Mandalay Hill with a panoramic view of myriad pagodas, the superb architecture of the Royal Palace and its beautiful moat. The resort is also within easy reach of ancient monuments and historical sites.

- Accommodation in a deluxe room, and breakfast daily.

Price* *Please note: prices are subject to change*

\$168 Per person, twin share

\$335 Single supplement

Private Transfer: Yangon, with English-speaking guide
Airport/hotel OR hotel/airport \$52 per person twin share/\$97 single

*Prices subject to change. Due to a very strong and continuous increase in demand for travelers to Myanmar, prices may increase without notice. Deposit is required to secure bookings and prices. Surcharges may apply for holiday periods. Please ask your Cruiseco travel agent for confirmed pricing and availability. Tour costs do not include fees for visas, meals other than those specified in the itinerary, drinks, or personal expenses.



Land of festivals

FESTIVALS

MORE ADVENTURE

Burma is famed for its festivals. Most are Buddhist in nature and they will add greatly to your adventure. Angela Saurine (escape.com.au, Sunday Telegraph) travelled with Cruiseco during the celebrated Water Festival in mid-April (hottest part of the year):

“We are innocently walking through the small village of Ohn Ne Kyaung behind our guide when out of the corner of my eye I spot him.

With a grin from ear to ear he steps forward next to the path and throws a large bowl of water at us, much to the delight of the giggling children who surround him.

He is quickly backed up by a toddler with a water pistol. We have no choice but to retaliate. I pull my water bottle out of my backpack and tip it over the head of a nearby child, who squirms and laughs as he runs away.

Soon we are embroiled in a water fight versus the village kids”.



Pantomine elephant, Bagan

4 January	Independence Day Marked with a seven day fair at Kandawgyi Lake, Yangon	Yangon
Early to mid January	Ananda Temple Festival Bagan dresses up its many pagodas as cultural performances fill the streets	Bagan
13-16 April	Thingyan Festival, Water Festival From bamboo stages lining streets, people splash water onto passers-by to washing away the previous years' bad luck and sins	Throughout Burma
17 April	Burmese New Year	Throughout Burma
Mid to late September	Phaung Daw Oo Pagoda Festival Featuring the famous one-legged boat rowers racing around Inle Lake	Inle Lake
October	Thadingyut, Festival of Lights Houses are ablaze with lantern candles, this festival observes the end of Lent	Throughout Burma (esp. Mandalay)

*Surcharge may apply to extra nights or extensions held during these festivals

Ashore in Burma you will use the kyat with

FAQ's



Is travel insurance required?

Travel insurance is a mandatory requirement of all Cruiseco Explorer holidays. Please note that some of the destinations we visit are remote and emergency services may be required. We recommend you get travel insurance before paying a deposit. Failure to obtain travel insurance will not waive any cancellation fees in the event that you need to cancel your trip.

Is a doctor on board and do I need injections before I travel?

There's no doctor on board. Limited medical facilities are available on board, and in the event of an emergency, the vessel will head to shore immediately. It's recommended you check with your doctor that you are fit for travel. Your doctor should also check as to whether any prophylactic drugs or inoculations are required.

What facilities are available in the cabins?

All cabins have their own air conditioning, en-suite shower, wc facilities, hairdryers, mini-safe, mini-fridge, intercom phones, luggage storage, wardrobe, writing desk, kimono, slippers, and chairs. Cabins do not have mini bars or televisions.

What sort of power adapter is used on board?

The electricity voltage is 230 volts; two round pin type as found in Continental Europe.

Do I need to take insect precautions?

To avoid insects entering your cabin, it is advisable to keep cabin windows and doors closed during the late afternoon and evening. It is also recommended that you apply insect repellent if you are outside your cabin or going ashore at dusk or at night. As a further precaution, please switch off lights before leaving your cabin.

Is there air-conditioning onboard?

You can control the air-conditioning in your cabin. It is not recommended to over-cool it as a sudden change from the temperature outside can bring on colds, respiratory illnesses and even stomach upsets.

What is the dress code?

The atmosphere onboard is informal and relaxed; comfortable, casual attire during the day and the evenings are smart-casual.

What drinks are included?

Locally produced soft drinks, local beer, coffee, tea and mineral water are served free of charge throughout the cruise. House wine and beer are served with lunch and dinner. Only liquors, premium wines or imported mineral waters will be charged.

Security

Moored or docked, Cruiseco Explorer will have a crew member watching the gangway and controlling access. However, we request you lock the cabin door and use your cabin's safe. No liability will be accepted by the company for loss of any valuable items from the ship or while guests are ashore on excursions.

What currency is used onboard?

Cruiseco Explorer's onboard currency is the USD. You'll have a ship account to sign a bill for all purchases and services throughout the cruise. Onboard charges will be in USD and accounts can be settled by cash or credit card (only Visa or Mastercard—surcharges apply). Please note: only accounts over \$25 USD can be paid by credit card. There is a limited money exchange service on board but travellers cheques are not accepted.

The local currency is the kyat but most vendors ashore take USD. Main cities (Bagan included) have ATM's and travellers cheques can be exchanged in local banks but this is not recommended. Hotels and shops charge up to 7% for credit card processing.

Am I required to tip the staff onboard?

Gratuities are included in your cruise fare and passengers are not expected to tip staff individually or collectively.

Is there Internet access onboard?

While Cruiseco Explorer does have wireless internet facilities, the available signal provided by local internet service providers is not yet adequate to provide a strong signal during most of the voyage. Wireless internet is available at your hotel in Yangon and Mandalay, and it is highly recommended to advise your friends and family that you will only be able to access the internet during these times and not during your cruise.

Are there laundry facilities?

A laundry bag is provided for your needs and a laundry list is available in your cabin. Laundry is collected each morning when your room is made up and will be returned the following day. It's not recommended to have 'whites' washed onboard. Charges for the laundry service will be made to your onboard account.

Is the water onboard suitable for drinking?

The vessel's water supply is from the river but it is run through a sterilisation plant. It is suitable for washing and brushing teeth but NOT drinking. Bottled drinking water is provided free of charge. Never accept ice in drinks and avoid ice creams, crushed sugar cane, salads or the skins of fruits when ashore.

Is smoking permitted onboard?

Smoking is not permitted in your cabin, private balcony or any internal areas. It's permitted only on open areas of the sun deck.

What type of meals are provided onboard?

Breakfast and lunch is a buffet and dinner is served at the tables. We offer a fusion of Asian and Western cuisine and vegetarian dishes can also be requested. Other special meal requirements will be made on a 'request' basis only and can't be guaranteed. Please advise your Cruiseco travel agent of your requirements at time of booking.

Can I have a double bed?

All beds can be converted into doubles except the two aft suites and the two deluxe suites (bow) which are fixed doubles.

Are there lifts onboard and facilities for wheelchairs?

There are no lifts and the ship is not equipped for passengers travelling in a wheelchair. The vessel regularly moors where paths can be muddy and slippery. It is recommended passengers be relatively fit, able-bodied and able to walk over uneven surfaces. Please consult your Cruiseco travel agent with any questions.

Will my mobile phone work?

These operators offer service: SINGTEL (Singapore), AAIS (Thailand), Mobifone (Vietnam), Unicom (China), SK Telephone (S. Korea), NTT DOCOMO (Japan), Hutchinson (Hong Kong), China Mobile (China). Please check with your local carrier for roaming charges before travelling.

Will I need a visa?

Australian passengers must obtain a visa for Burma. This fee is not included in the cost of your holiday. Ensure your passport has sufficient validity (over six months) before travelling. Please speak to your Cruiseco travel consultant for visa information.

What is etiquette in Burma?

South-East Asians are generally tolerant and easy going. Please do not raise political issues with people, let them raise them. In Burma disrespect for the national religion, Theravada Buddhism, can cause upset. Buddhists open their temples to visitors and permit photography but you must remove shoes and socks. Do not 'point' with your feet or touch peoples' heads or upper body. Never cross your legs in the company of monks or elders and ladies should not sit next to monks. Do not shake hands with monks, nuns and people in general; rather smile and nod. Shorts and skirts should be longish but it is OK to expose arms.



an exchange rate of approx. 900 for 1 Australian dollar*

* subject to change

Booking Conditions

Reservations and payments

Bookings for these exclusive Cruiseco Explorer Holidays must be made with a Cruiseco travel agent.

On confirmation of your booking, a written confirmation will be sent to your Cruiseco travel agent. An option will be given for 7 days. Before the option expires it will be necessary for you to pay a deposit of \$1,000 per person. This deposit secures your holiday as requested. Failure to pay the deposit by the option due date may result in the cancellation of your booking.

Final payment is due 90 days prior to sailing. If your booking is made within 90 days prior to sailing, full payment, along with details of your travel insurance policy will be due immediately.

Fares

The fares quoted in this brochure are shown in Australian dollars and are based on a twin sharing basis, unless specified as a single cabin category. All rates are subject to change with or without notice.

Earlybird Fares

Earlybird fares may be withdrawn at any time without notice. Please ask your Cruiseco travel agent for details.

What's not included in your holiday price

Passport and visa fees, insurances of all kinds, laundry, phone calls, beverages (except for those noted as being included), additional accommodation made necessary by flight schedules and items of a personal nature are not included in the holiday costs advertised in this brochure.

Travel documentation

Travel documents will be sent to you approximately 14 days prior to departure from Australia (providing full payment has been received). If you are departing Australia earlier, please ask your Cruiseco travel agent to request your travel documents in good time.

Travel insurance

Travel insurance is mandatory for Cruiseco's Authentic Asia Holidays. We recommend that you obtain Travel insurance before paying a deposit. Failure to obtain travel insurance will not waive any cancellation fees in the event that you need to cancel your trip.

Booking changes and cancellations

In the unfortunate event that you should have to cancel your holiday, we must be notified in writing. The day that we receive this notice in writing, will be considered the date that your cancellation has been made. Certain cancellation fees apply to your holiday if cancelled after a deposit or final payment has been made.

Itinerary variations

Sometimes the impact of weather or other conditions on water levels, and or bridges along the river, will require alterations to Cruiseco Explorer's itinerary. Every effort will be made to keep itineraries and hotels as shown in the brochure but Cruiseco reserves the right to substitute itineraries or hotels. Itineraries are subject to change without notice. Any changes to itineraries will not result in eligibility for a refund.

Booking changes

A fee of \$25 per person will be charged for any revision or alteration made to a reservation after the booking is confirmed unless the change increases the value of the booking.

Cancellations and cancellation fees

Notice of cancellation must be made in writing to your Cruiseco travel agent. The following scale of charges (includes GST) will apply when notice of cancellation is given prior to sailing.

Days before sailing cancellation received	Cancellation charges
Administration fee on all cancellations	\$100 per person
90 plus days	Loss of deposit
60-89 days	50% of total holiday cost plus admin fee
30-59 days	75% of total holiday cost plus admin fee
29 days to day of departure or no show	100% of total holiday cost

Qantas frequent flyer points

Qantas Frequent Flyer points are awarded on Cruiseco holidays. Qantas Frequent Flyer members will receive one Qantas Frequent Flyer point for every \$1.50 spent. You must be a member of the Qantas Frequent Flyer program to earn points in accordance with the terms and conditions of the Qantas Frequent Flyer program. Points are not awarded on port charges, government fees, on board gratuities and air taxes.

Other conditions

It is your responsibility to ensure you have read all of the Booking Conditions and to provide valid travel documents. Be sure to ask your Travel Agent for advice concerning passport and visa requirements.

Cruiseco's statement of business practice

Your Cruiseco agent will provide you, on request, with a copy of Cruiseco's "Statement of Business Practice".

Booking arrangements

Your booking arrangements are to be made by your Travel Agent and the person effecting the booking, shall be deemed to have accepted the booking conditions.

These cruise holidays are promoted by:

Discovery Travel Centre Pty Ltd trading as Cruiseco

Licence No. 2TA001284 ABN 1 200 193 4461





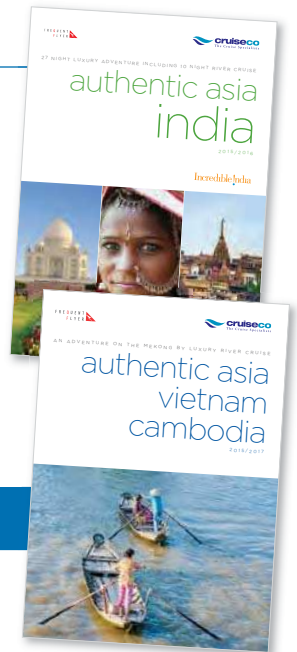
HAWTHORN Travel & Cruise

The world as it should be seen

www.hawthorntravel.com.au

info@hawthorntravel.com.au

+61 3 9819 2322 / 1800 679 365



CRUISECO ALSO OFFERS LUXURY RIVER CRUISING IN VIETNAM & CAMBODIA

